

# CTH3 800 T6 4kW F400 (279800106)

## GENERAL DATA



### ROOF FAN, ABS COWL 400°C/2h

#### MANUFACTURING FEATURES

- Roof cowl made of ABS
- Structure, roof base support and bird protection guard made of galvanised steel.
- High efficiency backward impeller with self-cleaning system of steel.
- Standard asynchronous motor with IP-55 protection and Class F insulation.

Manufactured with standard voltages: 230V 50Hz in single phase motors, 230/400V 50Hz in three phase motors and 400V 50Hz in 2 speed motors.

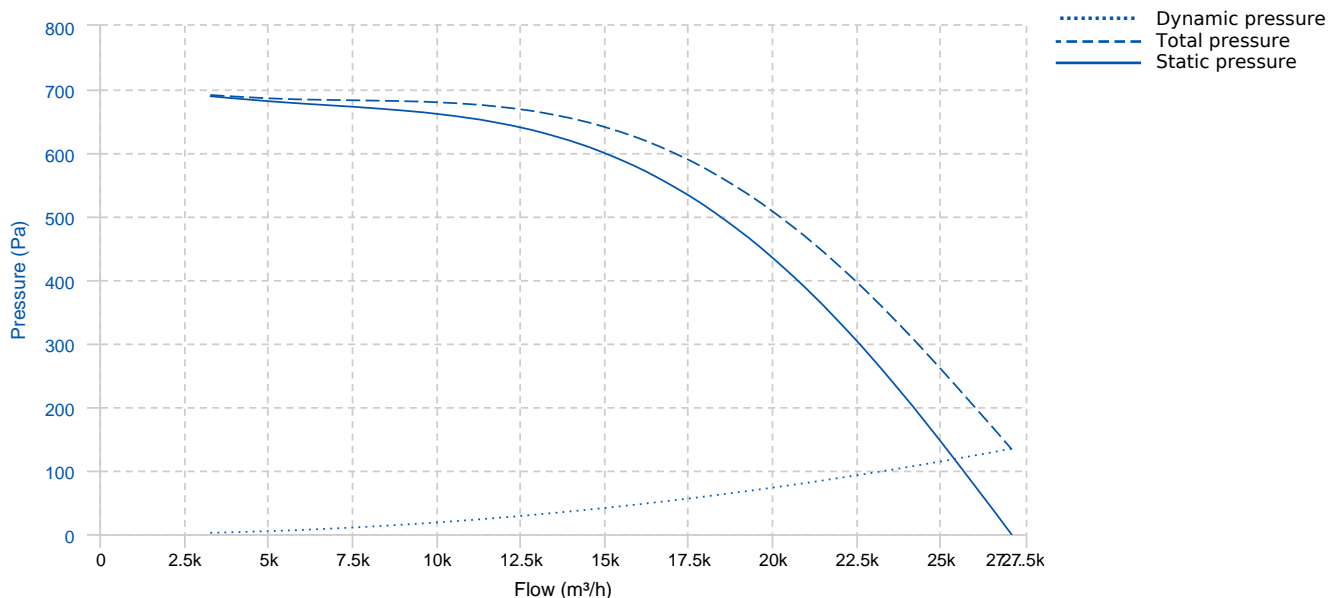
#### APPLICATIONS

Specially designed for roof installation, they are suitable for:

- Smoke extraction.
- Smoke emergency exhaust with motor outside the hazardous area.
- Air renewal in buildings and industries.
- Industrial and professional kitchen hoods.
- Maximum continuous working temperature: carried air 80°C, environment 60°C for three phase and 50°C for single phase motors.

Official homologation by the European laboratory APPLUS according to EN 12101-3:2015  
Certification Nr: 0370-CPR-2656

## PERFORMANCE CURVE



## TECHNICAL DATA

Fan							
RPM	960	Approx. weight	210 kg	Max. Flow	27090 m³/h		
Motor							
Power	4 kW	RPM	960	I max. (230V)	16,5 A	I max. (400V)	9,46 A

## Motor

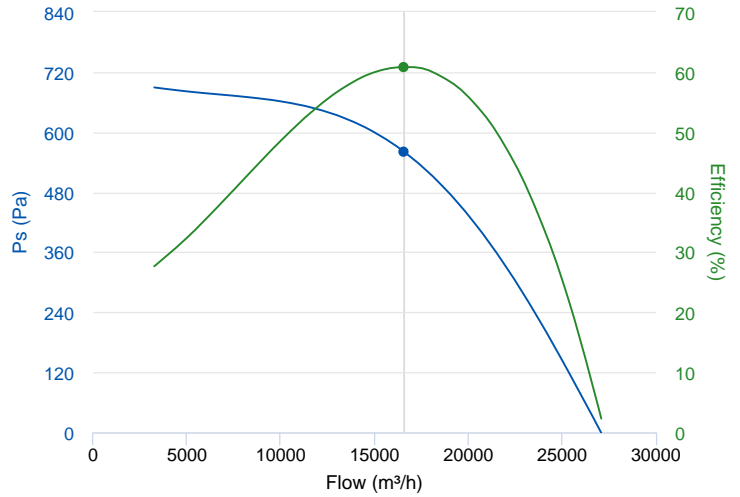
Size	132M	Approx. weight	68 kg	Efficiency (%)	86.8 %	FP	0.72
------	------	----------------	-------	----------------	--------	----	------

## ERP DATA

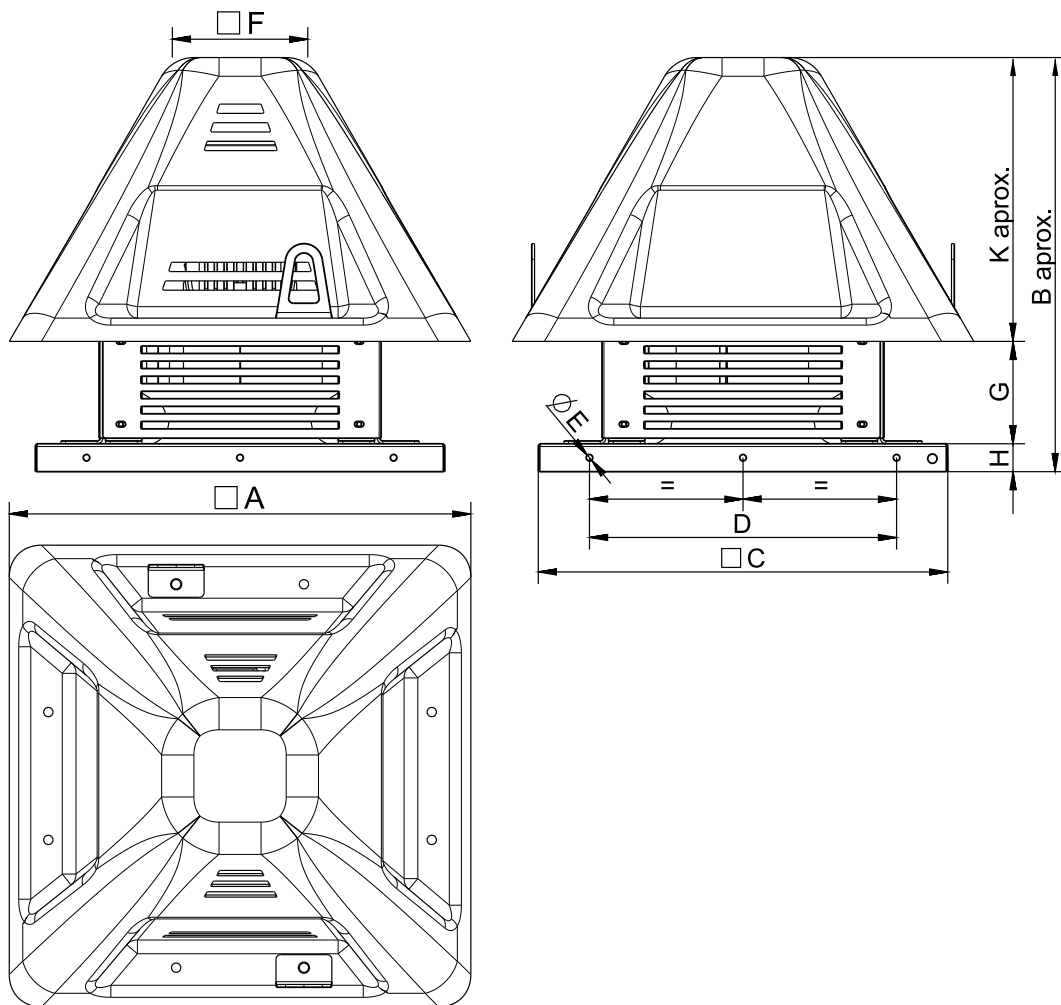
### Fan data sheet

Fan type	Unit for non-residential ventilation (LOT 6)
Typology	Unidirectional
reports.other	None
Type of driver	None
Motor power (kW)	4

	Fan values	ERP Requirements 2018
Max. efficiency (%)	60.85	51.18
Effic. Heat recovery (%)	-	
Pabs (kW)	4.399	
Flow (m³/h)	16576.11	
Static pressure (Pa)	560.53	
Speed (m/s)	9.16	
SFP (W/m3/s)	955.36	



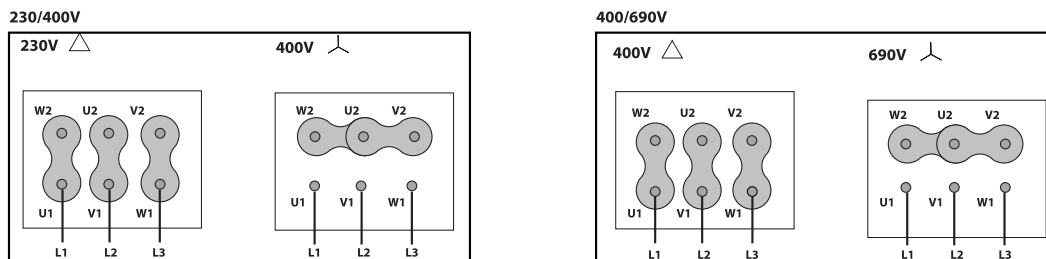
## DIMENSIONS



## Dimensions (mm)

A	1168,5	B aprox	1145	C	1035	D	840	E	9
F	429,6	G	466	H	50	K aprox	629		

## WIRING DIAGRAM



## ACCESSORIES



**SAFETY SWITCH**  
INT 25 3P A  
REF: INT253PA



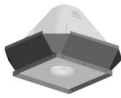
**SAFETY SWITCH FOR 400°C/2h**  
INT 400 40A 3P  
REF: 508904001



**FIXING KIT FOR CTH3**  
KF 710-800  
REF: 960004660



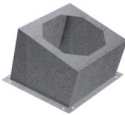
**CTH3 TILTING KIT**  
KB 710-800  
REF: 960004560



**CTH3 VERTICAL DISCHARGE**  
KV CTH-3 710-800  
REF: 960004760



**FREQUENCY SPEED CONTROLLER**  
SFC 400 III 12A \*  
REF: SFC400III12



**INCLINED ROOF FAN SUPPORT**  
BTI 1015  
REF: A-508701015XX

## SPARE PARTS



	Code	Model	Qty
1	R-279714479	ROOF COWL CTH3 710-800	x1
2	721001271	MOTOR 4KW T6 B5 230/400V	x1
3	R-CTB-CTH801-38A LG	IMPELLER CTH3 801 D.38 LG	x1
4	R-279801772	INLET-FRAME CTH3 800	x1